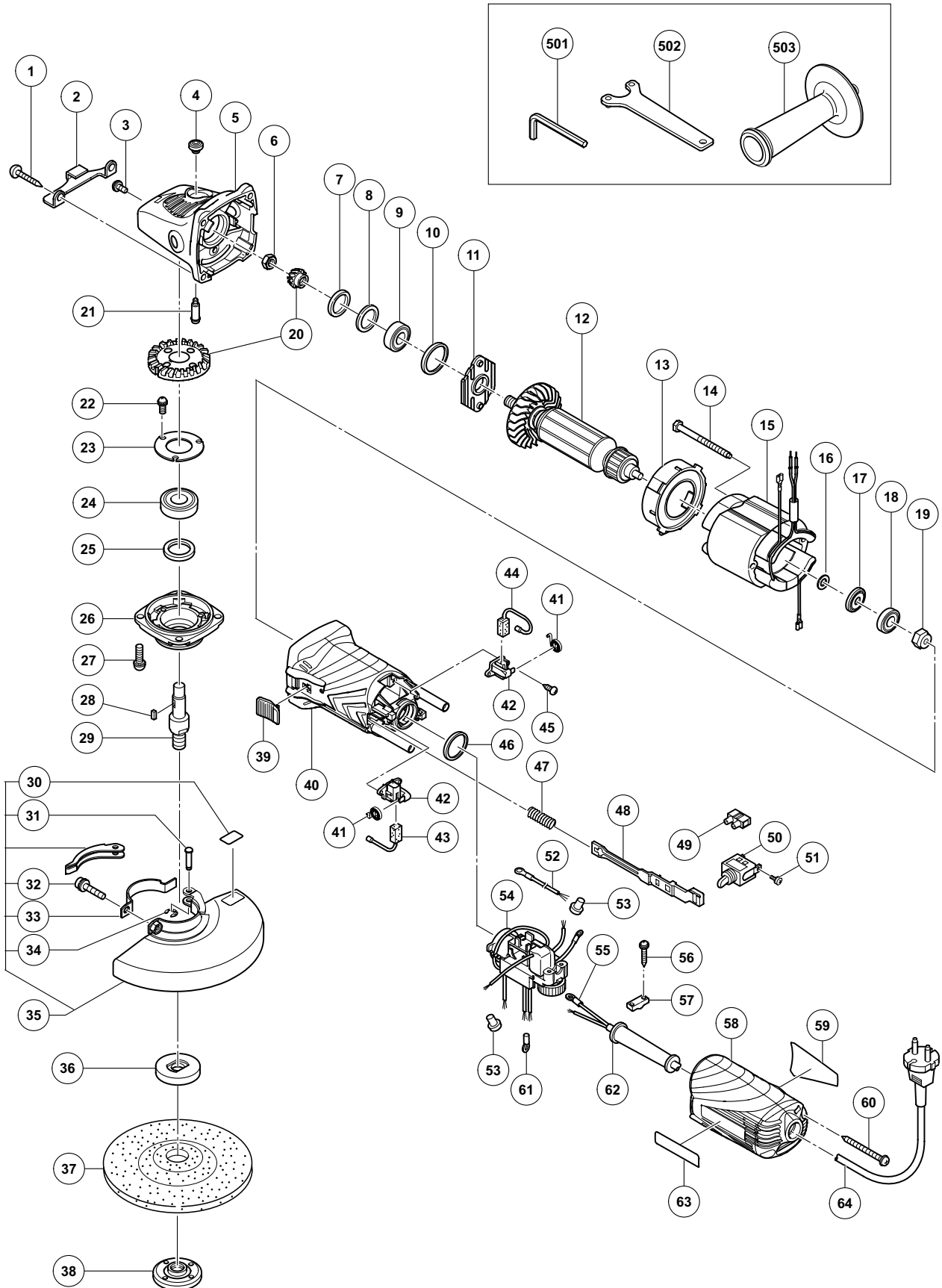


ELECTRIC TOOL PARTS LIST

DISC GRINDER Model G 15VA

2009·8·31
(E1)



PARTS

G 15VA

| ITEM NO. | CODE NO. | DESCRIPTION | NO. USED | REMARKS |
|----------|----------|--|----------|------------------|
| 1 | 320-523 | TAPPING SCREW D5 X 25 (BLACK) | 4 | |
| 2 | 331-931 | STOP PIECE | 1 | |
| 3 | 303-255 | SEAL LOCK SCREW (W/SP. WASHER) M4 X 10 | 2 | |
| 4 | 301-944 | PUSHING BUTTON | 1 | |
| 5 | 321-737 | GEAR COVER ASS'Y | 1 | INCLUD. 4, 21 |
| 6 | 309-191 | SPECIAL NUT M6 | 1 | |
| 7 | 308-543 | SEAL RING (A) | 1 | |
| 8 | 980-866 | WASHER (C) | 1 | |
| 9 | 629-T12 | BALL BEARING 629T12DDC3PS2-L | 1 | |
| 10 | 957-754 | RUBBER RING | 1 | |
| 11 | 321-734 | BEARING COVER | 1 | |
| * 12 | 360-870U | ARMATURE ASS'Y 120V | 1 | INCLUD. 9, 16-18 |
| * 12 | 360-870E | ARMATURE 230V-240V | 1 | |
| 13 | 321-732 | FAN GUIDE | 1 | |
| 14 | 982-021 | HEX. HD. TAPPING SCREW D4 X 70 | 2 | |
| * 15 | 340-749D | STATOR 120V-127V | 1 | |
| * 15 | 340-749E | STATOR ASS'Y 220V-240V | 1 | |
| 16 | 311-737 | THRUST WASHER | 1 | |
| 17 | 311-435 | DUST SEAL (A) | 1 | |
| 18 | 608-VVM | BALL BEARING 608VVC2PS2L | 1 | |
| 19 | 325-475 | MAGNET | 1 | |
| 20 | 311-486 | GEAR ASS'Y | 1 | |
| 21 | 301-943 | LOCK PIN | 1 | |
| 22 | 991-207 | SEAL LOCK SCREW (W/SP. WASHER) M4 X 8 | 3 | |
| 23 | 936-680 | BEARING COVER (B) | 1 | |
| 24 | 620-1DD | BALL BEARING 6201DDCMPS2L | 1 | |
| 25 | 308-546 | FELT PACKING | 1 | |
| 26 | 308-545 | PACKING GLAND | 1 | |
| 27 | 307-046 | SEAL LOCK SCREW (W/SP. WASHER) M5 X 16 | 4 | |
| 28 | 944-109 | FEATHER KEY 3 X 3 X 8 | 1 | |
| * 29 | 994-301 | SPINDLE (A) | 1 | |
| * 29 | 994-302 | SPINDLE (B) | 1 | FOR USA, CAN |
| 30 | 311-492 | LABEL | 1 | |
| 31 | 311-744 | SET PIN | 1 | |
| 32 | 316-107 | HEX. SOCKET HD. BOLT (W/WASHERS) M5 X 20 | 1 | |
| 33 | 311-491 | SET PIECE (B) | 1 | |
| 34 | 874-759 | RETAINING RING (E-TYPE) FOR D2.5 SHAFT | 1 | |
| 35 | 311-490 | WHEEL GUARD ASS'Y | 1 | INCLUD. 30-34 |
| * 36 | 937-817Z | WHEEL WASHER | 1 | |
| * 36 | 937-928Z | WHEEL WASHER (A) FOR D16 HOLE | 1 | FOR USA, CAN |
| 37 | 316-823 | D. C. WHEELS 150MM A36Q (10 PCS.) | 1 | |
| * 38 | 994-324 | WHEEL NUT M14 | 1 | |
| * 38 | 937-923P | WHEEL NUT 5/8"-11UNC | 1 | FOR USA, CAN |
| 39 | 330-810 | SLIDE SWITCH KNOB | 1 | |
| 40 | 330-808 | HOUSING | 1 | |
| 41 | 308-536 | SPRING | 2 | |
| 42 | 308-535 | BRUSH HOLDER | 2 | |
| 43 | 999-088 | CARBON BRUSH (1 PAIR) | 1 | |
| 44 | 999-076 | CARBON BRUSH (AUTO STOP TYPE) (1 PAIR) | 1 | |
| 45 | 306-945 | TAPPING SCREW D3 X 10 | 4 | |

