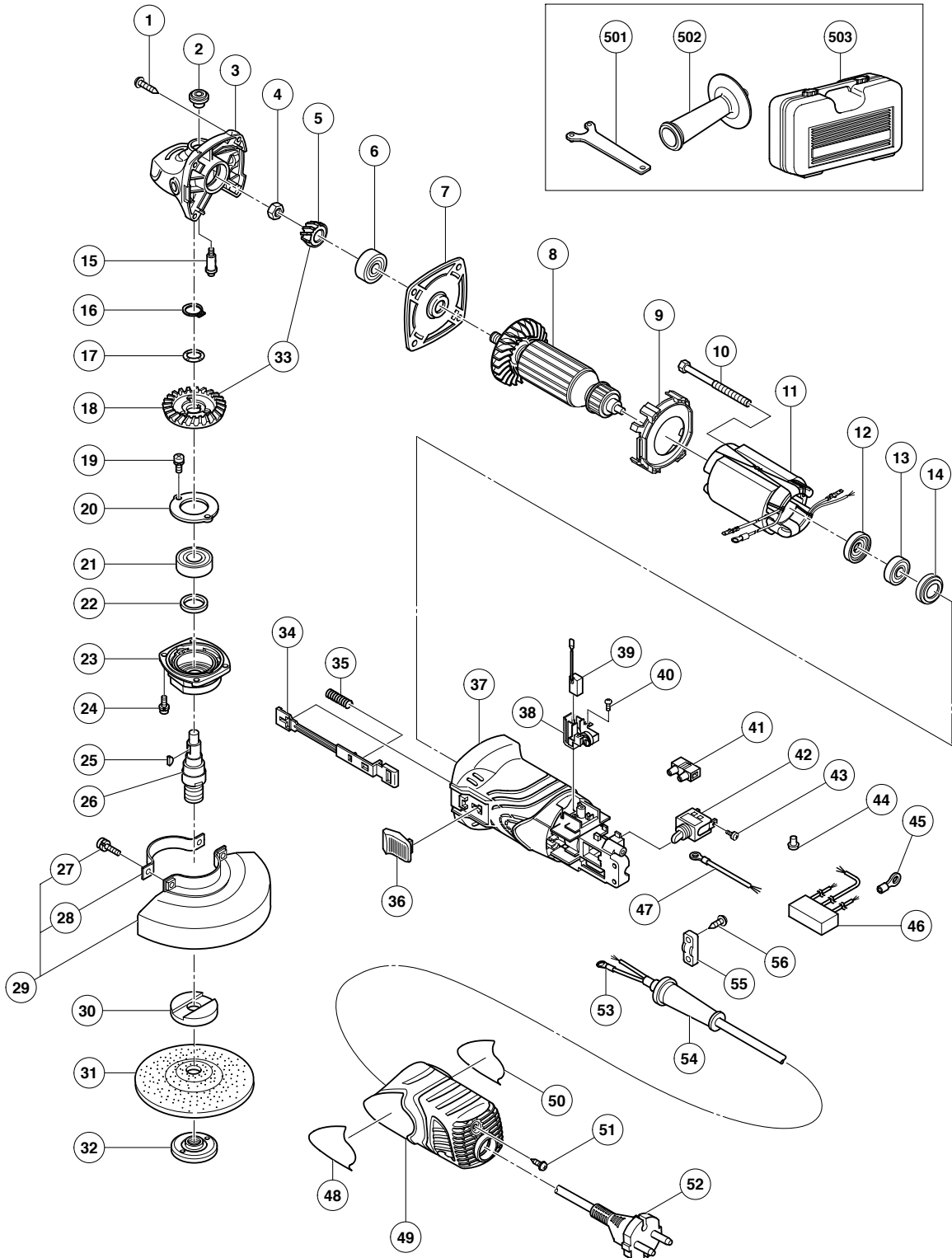


ELECTRIC TOOL PARTS LIST

■ DISC GRINDER
Model G 13SR3

2007 · 4 · 13

(E1)



PARTS

G 13SR3

ITEM NO.	CODE NO.	DESCRIPTION	NO. USED	REMARKS
1	307-028	TAPPING SCREW (W/FLANGE) D4X25 (BLACK)	4	
2	301-944	PUSHING BUTTON	1	
3	327-891	GEAR COVER ASS'Y	1	INCLUD. 2, 15
4	309-191	SPECIAL NUT M6	1	
5	327-889	PINION	1	
6	628-VVC	BALL BEARING 628VVC2PS2-L	1	
7	327-887	BEARING HOLDER	1	
8	360-799E	ARMATURE 220V-240V	1	
9	327-886	FAN GUIDE	1	
10	963-712	HEX. HD. TAPPING SCREW D4X65	2	
* 11	340-702E	STATOR 220V-230V	1	
* 11	340-702F	STATOR 240V	1	
12	321-722	DUST SEAL	1	
13	626-VVM	BALL BEARING 626VVC2PS2L	1	
14	309-929	RUBBER BUSHING	1	
15	301-943	LOCK PIN	1	
16	316-487	RETAINING RING FOR D11 SHAFT	1	
17	316-486	WAVE WASHER	1	
18	327-890	GEAR	1	
19	987-201	SEAL LOCK SCREW (W/SP. WASHER) M4X10	2	
20	316-490	BEARING COVER	1	
21	620-1VV	BALL BEARING 6201VVCMP2L	1	
22	301-946	FELT PACKING	1	
23	316-489	PACKING GLAND	1	
24	951-039	MACHINE SCREW (W/SP. WASHER) M4X12	4	
25	302-047	WOODRUFF KEY	1	
26	327-896	SPINDLE	1	
27	308-386	MACHINE SCREW (W/SP. WASHER) M5X16 (BLACK)	2	
28	301-949	SET PLATE	1	
29	319-116	WHEEL GUARD ASS'Y	1	INCLUD. 27, 28
30	937-817Z	WHEEL WASHER	1	
* 31	316-822	D. C. WHEELS 125MM A36Q (25 PCS.)	1	FOR INA, SIN, KUW, NZL, AUS
32	994-324	WHEEL NUT M14	1	
33	327-888	GEAR ASS'Y	1	INCLUD. 5, 18
34	327-893	SLIDE BAR	1	
35	314-429	SPRING	1	
36	314-428	SLIDE KNOB	1	
37	327-885	HOUSING ASS'Y	1	INCLUD. 14
38	327-895	BRUSH HOLDER ASS'Y	2	
39	999-091	CARBON BRUSH (AUTO STOP TYPE) (1 PAIR)	2	
40	328-210	TAPPING SCREW D3X8	4	
41	938-307	PILLAR TERMINAL	1	
42	314-603	SWITCH (1P SOLDER TYPE)	1	
43	305-499	MACHINE SCREW (W/WASHER) M3.5X6	2	
* 44	959-140	CONNECTOR 50091 (10 PCS.)	1	EXCEPT FOR INA, SIN, KUW
* 45	980-063	TERMINAL	1	FOR NOISE SUPPRESSOR
* 46	994-273	NOISE SUPPRESSOR	1	EXCEPT FOR INA, SIN, KUW
* 47	328-509	INTERNAL WIRE	1	EXCEPT FOR INA, SIN, KUW
48		HITACHI LABEL	1	
49	327-894	TAIL COVER	1	
50		NAME PLATE	1	

STANDARD ACCESSORIES

G 13SR3

ITEM NO.	CODE NO.	DESCRIPTION	NO. USED	REMARKS
501	938-332Z	WRENCH	1	
502	318-312	SIDE HANDLE	1	
* 503	319-375	CASE	1	FOR NZL, AUS

OPTIONAL ACCESSORIES

ITEM NO.	CODE NO.	DESCRIPTION	NO. USED	REMARKS
601	314-062	SANDING DISCS 125MM C-P16 (10 PCS.)	1	
602	314-063	SANDING DISCS 125MM C-P20 (10 PCS.)	1	
603	314-064	SANDING DISCS 125MM C-P24 (10 PCS.)	1	
604	314-065	SANDING DISCS 125MM C-P30 (10 PCS.)	1	
605	314-066	SANDING DISCS 125MM C-P36 (10 PCS.)	1	
606	314-067	SANDING DISCS 125MM C-P40 (10 PCS.)	1	
607	314-068	SANDING DISCS 125MM C-P50 (10 PCS.)	1	
608	314-069	SANDING DISCS 125MM C-P60 (10 PCS.)	1	
609	314-070	SANDING DISCS 125MM C-P80 (10 PCS.)	1	
610	314-071	SANDING DISCS 125MM C-P100 (10 PCS.)	1	
611	314-072	SANDING DISCS 125MM C-P120 (10 PCS.)	1	
612	937-826Z	WASHER NUT	1	
613	937-825Z	RUBBER PAD	1	